

NEWPORT RESIDENCE

2006 CLCA Medium Residential Award Winner

Description of Project:

This garden for a small new residence in Novato focused on creating an striking arrival space and space efficient usable back yard. A variety of Mediterranean and Asian themed plantings are layered to create texture and space

Design/Built by: *O'Connell Landscape*

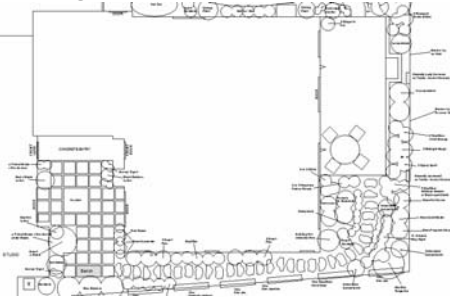
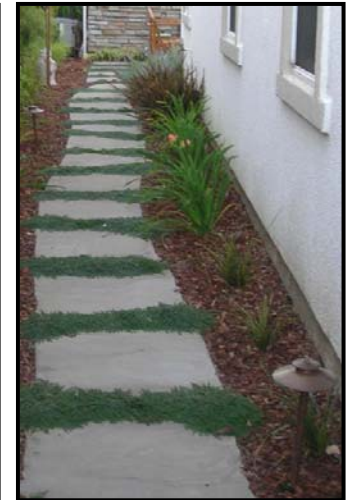
Budget: Moderate

Design Style: Modern, Mediterranean

Featured Plants: Creeping Thyme, Japanese Forest Grass, Mexican Bamboo

Featured Elements:

- Cut Granite Boulder Fountain
- Slabs of Flagstone planted with Groundcover
- Linking Stone Paths



O'Connell Landscape

365 Bel Marin Keys Blvd.
Suite 100, Novato, CA 94949
C27# 745046

Phone: (415) 462-9729
Fax: (415) 462-9832
ocl@oclandscape.com

www.oclandscape.com