

LARKSPUR RESIDENCE

2004 CLCA Design-Build Award Winner

Description of Project:

This landscape accompanied a large-scale remodel. The new distinct architecture of the house gave great opportunities for integration into the garden, with low angular walls and a planting scheme focusing on creating a Mediterranean style

Design/Built by: *O'Connell Landscape*

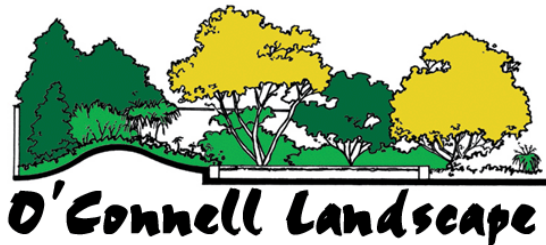
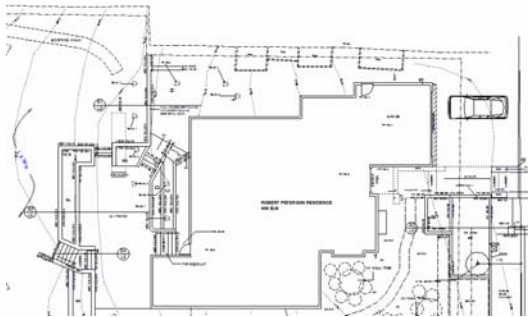
Budget: Large Scope

Design Style: Modern, Mediterranean

Featured Plants: Lavender, Trumpet Vine, Crape Myrtle, Blue Oat Grass, New Zealand Flax

Featured Elements:

- Indian Sandstone Entrance and Patios
- Stucco Retaining Walls
- Large Granite Boulder Fountain



365 Bel Marin Keys Blvd.
Suite 100, Novato, CA 94949
C27# 745046

Phone: (415) 462-9729
Fax: (415) 462-9832
ocl@oclandscape.com

www.oclandscape.com